



New light shines on research

Di Bartok

THERE is nothing that excites research scientists more than new-age equipment.

That is, apart from making breakthroughs in treatment of diseases, of course.

With the new correlative light and electron microscope at the Kids Research Institute attached to the Children's Hospital at Westmead, analysing diseases

and conditions has become easier.

The man in charge of the \$1.1 million confocal microscope is Laurence Cantrill, who said the cutting-edge laser machine was able to segment cells faster and more accurately than traditional microscopes.

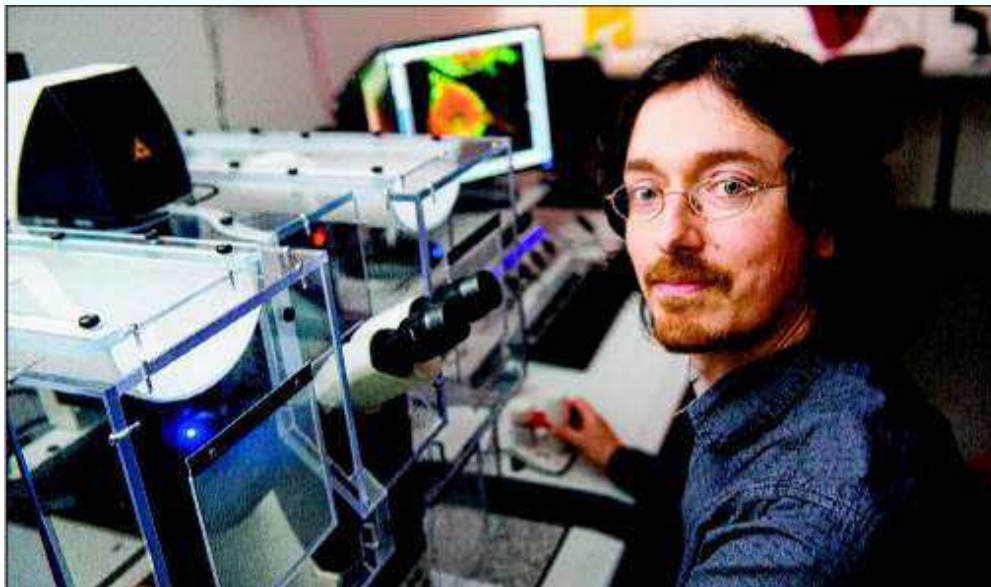
Cells are shown on screen in three-dimensional format, making analysis easier.

"Researchers will be able

to look at living cells in greater detail and clarity," Dr Cantrill said.

"This equipment will help in our treatment of conditions such as muscular dystrophy, cancer and kidney diseases."

The hospital officially opened the new correlative light and electron microscope suite, which has been funded by the government and private donations, last week.



Laurence Cantrill with the new microscope at the Kids Research Institute.